

Demo: **PdeSolve**

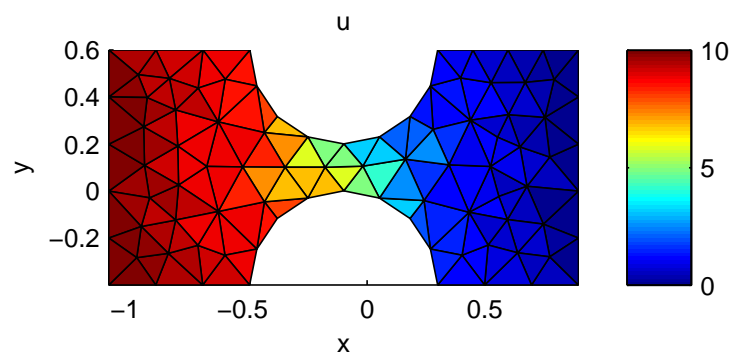
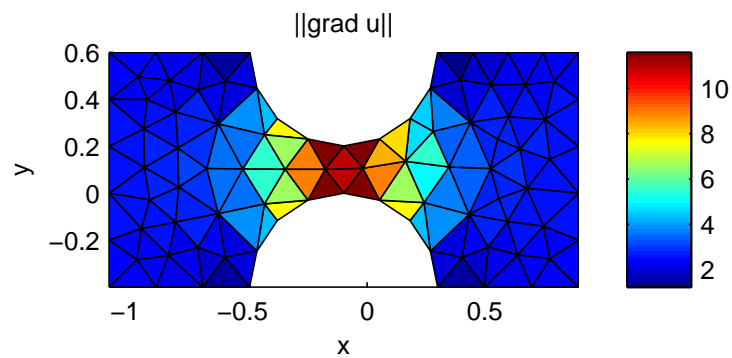
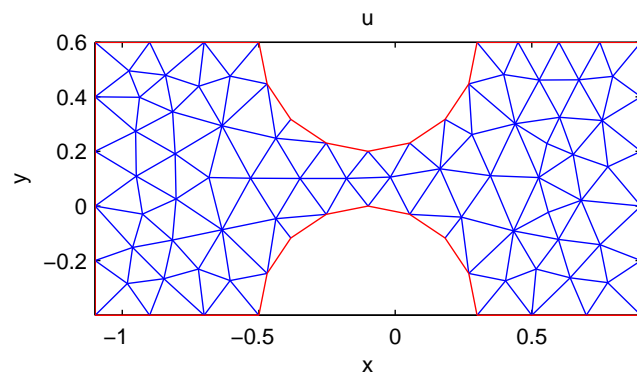
Geometrievorbereitung: `make_geometry.m`

Geometriedata: `pde_initial.mat`

Bilder: `pdesolve.m`

Laplace Gleichung mit Dirichlet RB $u = 10$ links, $u = 0$ rechts. Homogene Neumann RB sonst.

Ausgangsgitter:



2x verfeinert:

